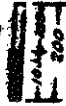


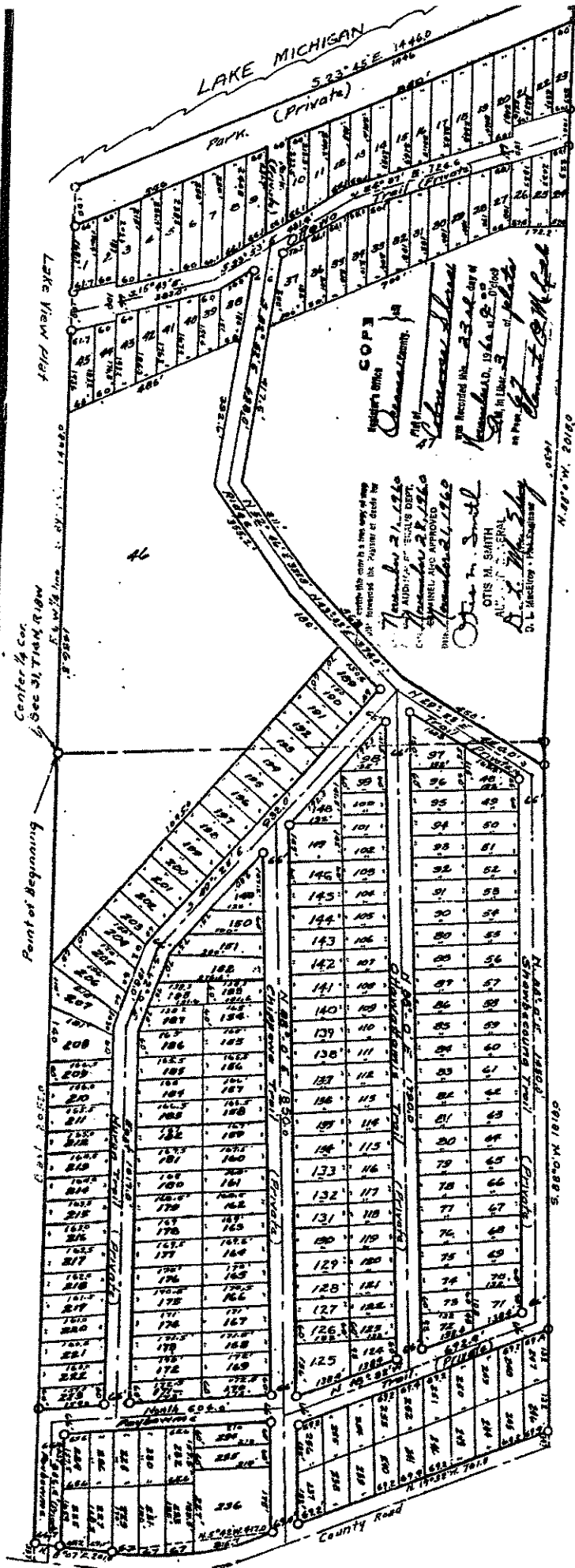
43477

# COBMOOSA SHORES

SEC. 31, T14N, R18W  
Benona Twp., Oceana Co., Mich.



Scale 1"=200'  
All dimensions are in feet  
or decimals thereof



A = 27° 39'  
R = 0.920

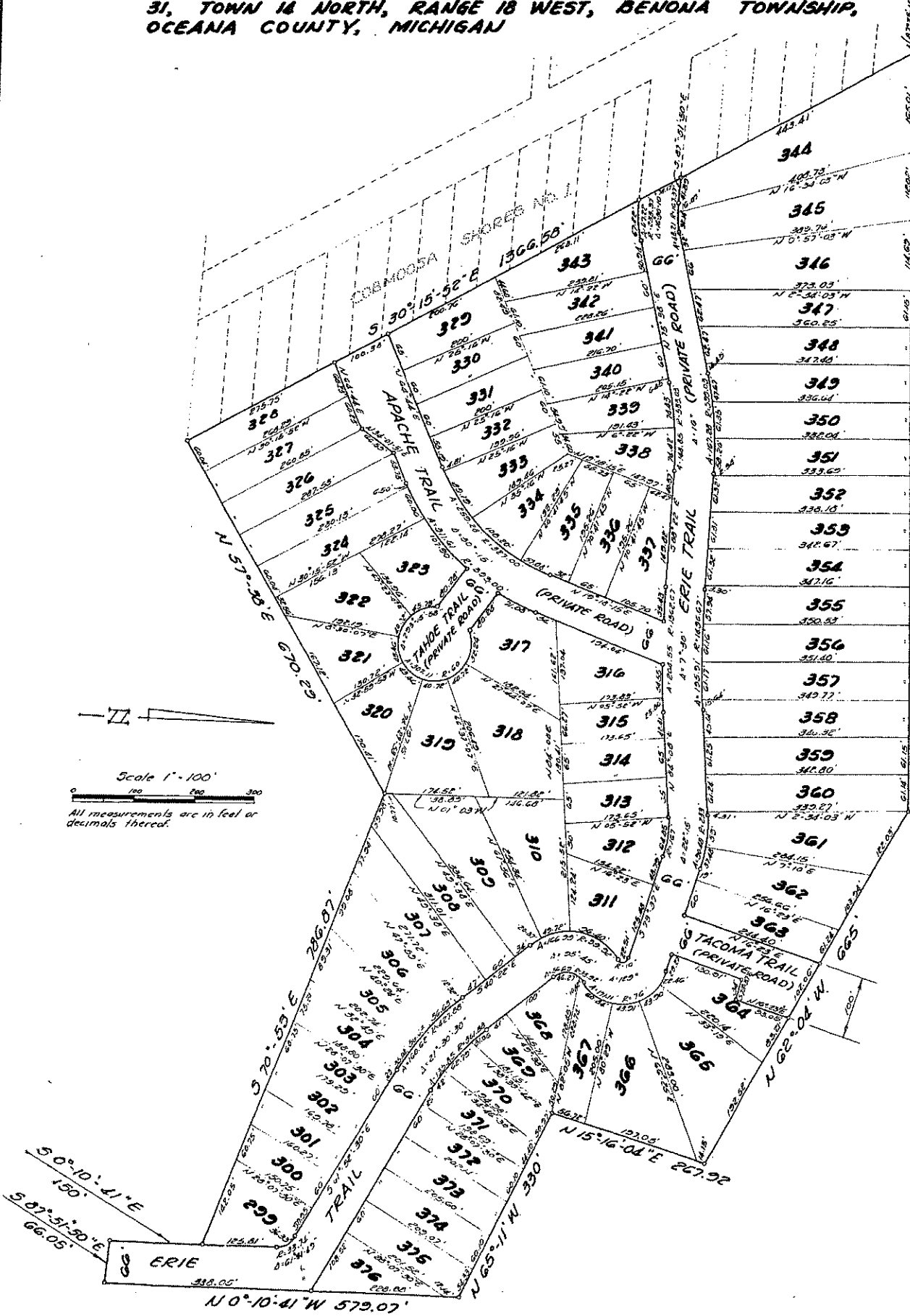
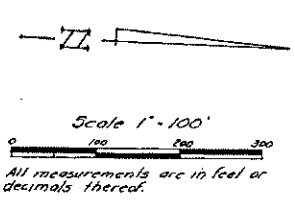
copy

# COBMOOSA SHORES NO. 2

BEING A SUBDIVISION PART OF THE NORTHWEST 1/4 OF SECTION 31, TOWN 14 NORTH, RANGE 18 WEST, BENONA TOWNSHIP, OCEANA COUNTY, MICHIGAN

M.W. COE  
SEC. 31

POINT OF BEGINNING  
S 87° 25' 57" N 1247.01' 1247.01' S  
NORTH LINE NW 1/4 SEC. 31



Copy #1

# COBMOOSA SHORES NO. 1

BEING A SUBDIVISION PART OF THE NORTHWEST 1/4 OF SECTION 31, TOWN 14 NORTH, RANGE 18 WEST, BENONA TOWNSHIP, OCEANA COUNTY, MICHIGAN

